

--

specifications
subject
to change

© 2025
rev. 11/29/2025

job name:

type:

12"/18"/24" na.row™ ceiling spec sheet 90CRI

material
3.5" dia smooth extruded aluminum outer housing in five lengths, available in 15 standard powder coat paint finishes listed below. premium RAL and wood finishes also available.

LED
COB in 2700K, 3000K, 3500K, or 4000K 90+ cri standard rated >36,000 hours L70 (6.8K) per LM-80 test data.

downlight optics
LEDiL® Angelina 82mm dia 31mm high (RoHS compliant) available in 20° spot, 30° medium, 50° wide with specular anodized finish. 90° extra wide features matte white highly reflective finish. color mixing sublens standard. standard mounting clamp allows for easy replacement of reflector in field. the typical total beam angle is the full angle measured where the luminous intensity is half of the peak volume.

driver
integral,* constant current, class P, class 2 power unit, class A sound rating, universal input (120-277V) programmable driver, 5% minimum dimming level, PF >0.90. protections include short circuit, input/output isolation and surge protection (3KV). wired for 0-10v dimming from factory. *H3 lumen package in C7606 requires min. 2-1/8" deep j-box. 6"dia canopy painted to match fixture. satin black canopy standard on wood finishes.

mounting
standard
driver in junction box (requires 2 1/8" deep electrical box). for other sizes, driver in top of fixture. see note for H3 lumen package on 6" ht. 6"dia canopy painted to match fixture.

remote enclosure (.LV) (optional)
the standard driver can be remote mounted up to 33ft from the LED. suspension length should be considered in distance. remote enclosure supplied. for distances greater than 33ft consult factory. for Chicago Plenum installation consult factory.

finish
select from 15 standard powder coat paint finishes or 3 wood finishes (listed below) or specify RAL# for custom colors.

emergency
if required, recommend use of inverter (by other).

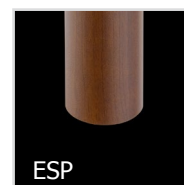
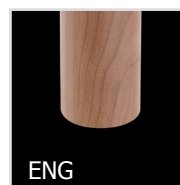
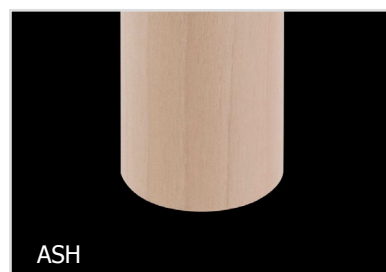
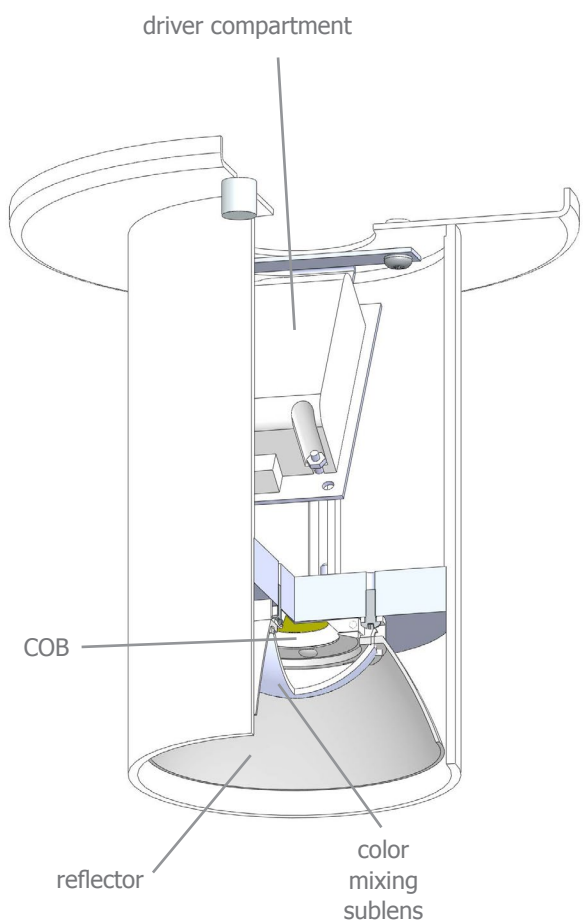
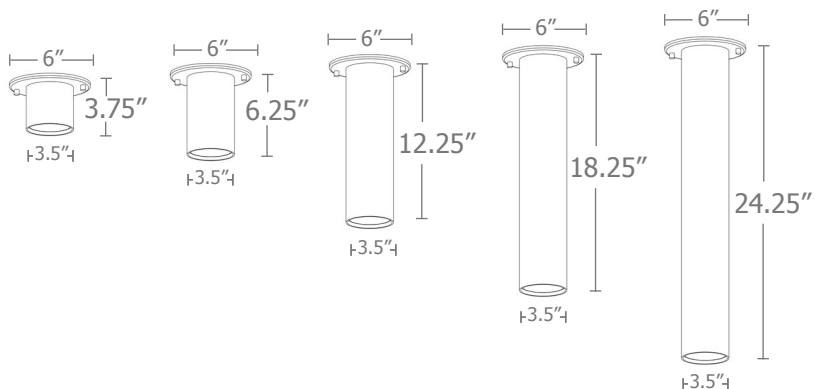


catalog number

size	beam	CCT	lumens	painted finish	
C7612 driver in fixture 3.5"dia X 12.25"ht	S 20° spot	27 2700K	L1 395 lm	AP	anodized paint
	M 30° med	30 3000K	L2 695 lm	BS	brass
	W 50° wide	35 3500K	L3 995 lm	BU	blue
C7618 driver in fixture 3.5"dia X 18.25"ht	XW 90° extra wide	40 4000K	H1 1390 lm	BZ	bronze
			H2 1985 lm	CP	champagne
			H3* 2780 lm	FB	flat black
C7624 driver in fixture			<small>*H3 lumen package in C7506 requires min. 2-1/8" deep j-box.</small>	GM	gun metal
C7624.BABA driver in fixture 3.5"dia X 24.25"ht				MB	military blue
				MW	matte white
				OR	orange
				RD	red
				SB	satin black
				SS	satin silver
				TG	textured gray
				YO	yellow
				premium finish	
				RAL specify RAL#	
				wood finish	
				ASH	ashwood
				ENG	english brown oak
				ESP	espresso



This product meets the guidelines for the Build America, Buy America Act.
Some Exclusions Apply. For more information and full list of eligible SKUs, please contact the factory at info@impactltg.com

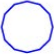


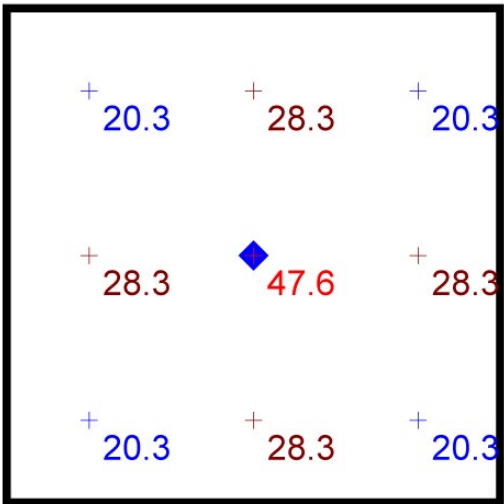
Typical Lighting Layout



- 6' x 6' x 9'H space
- 80/50/20 reflectances
- bottom of fixture at 8' aff
- FC readings at 2.5' aff
- layout conducted using C7612 with 90 CRI H1 (1390 lm) with wide dist. package

Schedule

Symbol	Quantity	Manufacturer	Catalog Number	Description	Lamp	Wattage
	1	Impact Architectural Lighting	C7612 W 40 H1	12" length na.row ceiling mount downlight cylinder	4000k 90cri LED	21



Plan View
Scale - 1" = 2ft

Statistics

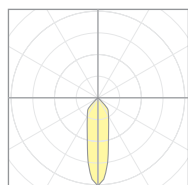
Description	Symbol	Avg	Max	Min	Max/Min	Avg/Min
na.row.ceiling	+	26.9 fc	47.6 fc	20.3 fc	2.3:1	1.3:1

Calculation Table

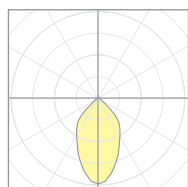
Consult factory for applications assistance

Cat No	Delivered* Lumens	Watts 120V / 277V	IES File #	LLF to be applied
L1	395	4	20921 spot	.12
			20922 med	.12
			20923 wide	.12
			20924 x-wide	.12
L2	695	7	20921 spot	.22
			20922 med	.22
			20923 wide	.22
			20924 x-wide	.22
L3	995	10	20921 spot	.31
			20922 med	.31
			20923 wide	.31
			20924 x-wide	.31
H1	1390	14	20921 spot	.43
			20922 med	.43
			20923 wide	.43
			20924 x-wide	.43
H2	1985	21	20921 spot	.62
			20922 med	.62
			20923 wide	.62
			20924 x-wide	.62
H3	2780	28	20921 spot	.86
			20922 med	.88
			20923 wide	.88
			20924 x-wide	.88

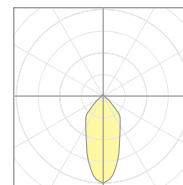
*delivered lumens based on 4000K, 90+ cri



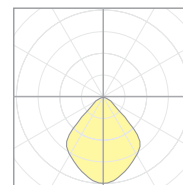
20921
P7506-S-40H3
S 20° spot



20923
P7506-W-40H3
W 50° wide



20922
P7506-M-40H3
M 30° med

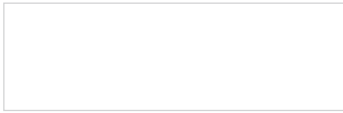


20924
P7506-EW-40H3
XW 90° extra wide

The application of a Light Loss Factor is required to:

- match the lumen output for the power module specified
- incorporate the increased lumen output due to LED/Driver upgrades

Powder Coat Paint Finishes



MW matte white



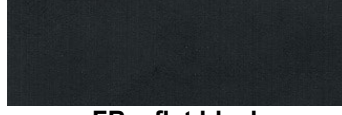
AP anodized paint



SS satin silver



TG textured gray



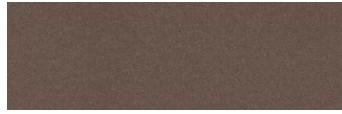
FB flat black



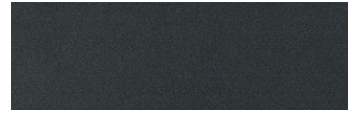
SB satin black



CP champagne



BZ bronze



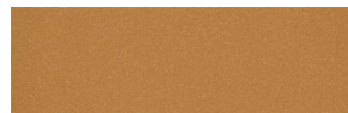
GM gun metal



OR orange 2011



BU blue 5017



BS brass



RD red 3020



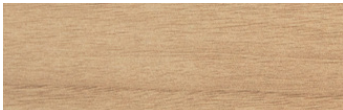
YO yellow 1018



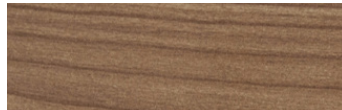
MB military blue

Premium Finishes*

Wood Finishes



ASH ashwood



ENG english brown oak



ESP espresso

For accurate color verification, actual finish samples are available upon request.



RAL#

*Available on select series. Consult product submittal for availability.

